

ANTHONY JAMES MANSEY

Residential Sales & Lettings



Linkfield Road

Isleworth, TW7 6QN

£540,000

Freehold

Council Tax Band D

A Victorian terraced property available to view now and being sold chain free. Situated in an excellent residential location and being in close proximity to Isleworth town with its wide range of local shops and cafes. Isleworth station serves Waterloo on a regular timetable. The H37 Hopper bus takes you to St Margarets and Richmond river side. Keys are available now to view this home, its accommodation providing on the ground floor of two reception rooms and kitchen. The first floor affords two double bedrooms and bathroom. There is ample scope to improve this property and also the ability to extend subject to planning permission. There is a private rear garden. For more information or to view please contact the agents.

Viewing

Please contact our Sales Office on 020 8847 0488 if you wish to arrange a viewing appointment for this property or require further information.

- A Period Two Bedroom Terraced House
- Two Reception Rooms
- Two Double Bedrooms
- Double Glazed Windows and Gas Central Heating
- Private Rear Garden
- Ample Scope to Improve and Extend (STPP)
- Being Sold chain Free
- Short Walk to Isleworth Station Serving Waterloo
- Excellent Variety of Local Shops and Cafes
- Keys Available to View Via the Owners Sole Agent



2



1

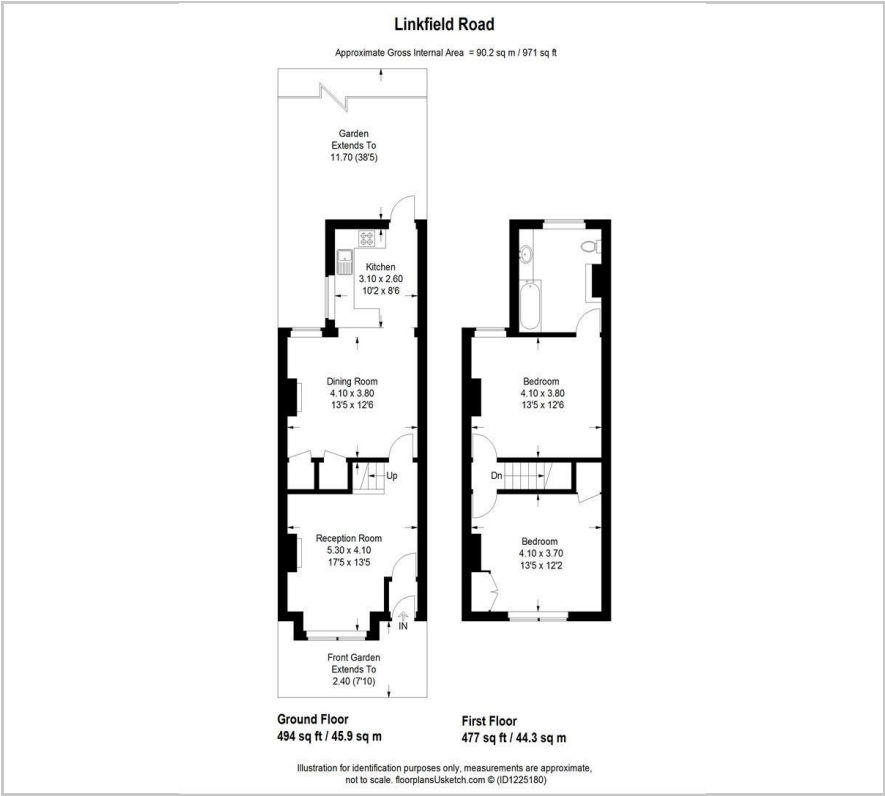


2



D

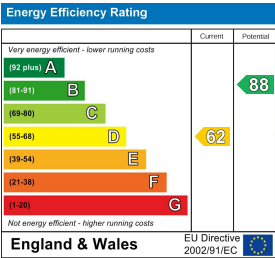
Floor Plan



Area Map



Energy Efficiency Graph



These particulars, whilst believed to be accurate are set out as a general outline only for guidance and do not constitute any part of an offer or contract. Intending purchasers should not rely on them as statements of representation of fact, but must satisfy themselves by inspection or otherwise as to their accuracy. No person in this firms employment has the authority to make or give any representation or warranty in respect of the property.